

BARGAIN
CORNWELL

BARGAIN
CORNWELL

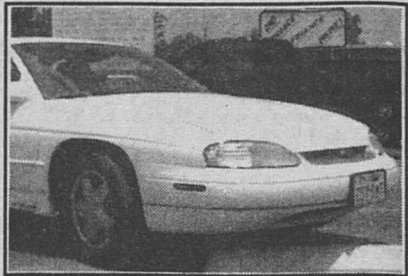
Check Out Our Great Prices On All These Great Used Cars!



1999 Olds Intrigue GX
2 to Choose From... **\$15,995⁰⁰**



1998 Chevy Lumina
Program Car **\$11,995⁰⁰**



1997 Chevy Monte Carlo
Lo Miles **\$11,995⁰⁰**



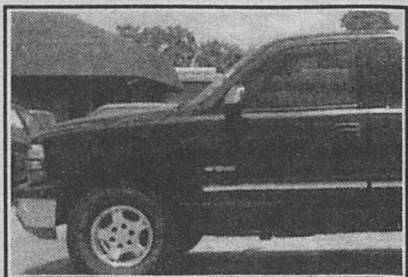
1997 Saturn SL-1
Great Car! **\$8,999⁰⁰**



1997 Nissan Sentra GXE
Loaded! **\$7,995⁰⁰**



1997 Buick Park Avenue
Beautiful! **\$14,000⁰⁰**



1999 Chevy Z71
Price Slashed! **\$22,999⁰⁰**



1995 Chevy Blazer
Price Slashed! **\$12,995⁰⁰**



Sales Manager Special!

1995 Buick Park Avenue
One Owner, Super Clean!
Sale Price... **\$10,995⁰⁰**

WE FINANCE!

LAKE MOTORS OF EAGLE LAKE 234-5556

Great Deals on Great Used Cars... Right Here At Home!

Nada-Garwood FCE reports meeting

The Nada-Garwood FCE Club met June 21 at 2 p.m. in the home of Millie Faykus.

Eleven members answered the roll with, "What I remember about my grandparents."

President Betty Leopold welcomed two new members to our club, Minnie Lee Connor and Anita Meisner.

Thank you notes were read from the families of Frieda Kubesch, Alfred Leopold and Helen Berger. A lovely thank you note from Minnie Lee Connor was also read.

Get well cards are to be sent to Raymond Hoffman, Edward Hoffman, Irene Skuca, Emelie Popp and Lucille Till.

The State FCE Convention will be held in Odessa in Sept. We will send a basket of rice and local recipe books as a door prize from our club on July 5.

Connor has been a member of Extension Homemakers for 10 years. She shared "Thoughts on Membership" with the group.

Let's Plant a Membership Garden

First: Plant four rows of PEAS: Presence, Promptness, Preparation and Perseverance.

Second: Plant three rows of SQUASH:

Squash gossip, squash indifference and squash criticism.

Third: Plant five rows of LET-TUCE:

Let us be loyal and unselfish, let us be faithful to duty, let us obey rules and regulations, let us be true to our obligations, let us love one another.

Finally: No garden is complete without TURNIPS:

Turn up with a smile, turn up for meetings, and turn up with new ideas, and turn up with determination to make everything count for something good and worthwhile!

Have a great summer vacation!!!

Lucille Till shared information from a health food book about eating more cabbage and using olive oil.

Leopold read: "I'm Tired" which was sent to her from her daughter.

For a couple of years I've been blaming it on lack of sleep, too much pressure from my job, earwax build-up, iron-poor blood. But now, I've found out the real reason. It's because I'M OVERWORKED! Here's why:

The population of this country is seven million, one million are retired. That leaves six million to do the work.

There are four and a half million in school or college.

Which leaves one and half million to do the work.

Of these, there are one-half million employed by the government, leaving one million to do the work.

One-half million are in the armed forces, which leaves one-half million to do the work.

Take from the total the 400,000 people who are unemployed, and that leaves 100,000 to do the work.

At any given time, there are 75,000

people in hospitals or on holiday, leaving 25,000 to do the work.

Now there are 24,998 people in prisons in this country, that leaves just two people to do the work. YOU AND ME.

And you're still sitting at your computer reading jokes!

Leopold also passed around a beautiful Family History Book of the Christian Family history. It was put together by our member residing in Waco, Elizabeth Schoellmann. We miss having Elizabeth with us at the meetings. She did a beautiful job putting together her family history book, complete with pictures.

Connor gave out free copies of the Consumer Information Catalog. Anything you are interested in can be found in this catalog.

Lu Juan Braden gave out copies of "My Special Prayer" with a copper penny attached. She also shared copies of local cooks that have been featured as "Cook of the Week" in the Country World Newspaper. They were Irene Skuca, Ella Buzek, Till, Leopold, Dorothy Hyek and Braden.

The Green Thumb committee and Lorine Bubela reported gardens are about gone for now due to the heat.

Hospitality Chairman Regina Scheffler sent sympathy cards to the Helen Berger and Frieda Kubesch families. Donations were made the St. Mary's Cemetery Fund in memory of our two precious members. They will be missed for years to come.

Election of officers, by acclamation are: President, Betty Leopold; Vice-President, Irene Skuca; Secretary: La Juan Braden; Treasurer, Lucille Till; Council Delegate, Lucille Till; Alternate, Regina Scheffler.

Leona Wesselski volunteered to replace Helen Berger on the Telephone Committee. A new telephone list will be sent out in the mail soon.

Woman of the Year sheets were filled out.

No members have birthdays in May, but Till's birthday is June 27.

Door prizes were won by all those present: Meisner, Jessie Pavlicek, Faykus, Buzek, Wesselski, Leopold, Till, Tillie Janish, Scheffler, Connor and Braden.

The next meeting will be held Wednesday, Aug. 16, at 2 p.m. in the home of Connor.

Loans

Continued from Page 7

Center at 202-720-2600 (voice and TDD).

To file a complaint of discrimination, write USDA, Director, Office of Civil Rights, Room 326-W, Whitten Building, 14th and Independence Avenue, SW, Washington, D.C., 20250-9410; or call 202-720-5964 (voice or TDD).

USDA is an equal opportunity provider and employer.

LCRA donates \$300 to senior citizen community

Senior citizens who are a part of the Eagle Lake Senior Citizen community and reside at the Kevin Court Apartments benefited from a \$300 donation given by employees of the Lower Colorado River Authority (LCRA) for an "LCRA Day."

The donation provided \$250 for a

free lunch and \$50 for door prizes on Wednesday, June 7, from 9 to 11 a.m. for those who live at the community.

Medical screenings were also provided by the Rice Medical Center.

"With donations and continued involvement, we hope to be able to provide these kinds of functions and

benefits to our members," said Brenda Bittner, manager for the Eagle Lake Senior Community Center.

LCRA employees, through the Employees Activity Committee, sponsor LCRA Days at senior citizens centers throughout LCRA's service area.

"This is one way LCRA employees can honor the senior citizens who have been such an important part of our communities," said Evelyn Herzog, an LCRA community coordinator.

The LCRA is a conservation and reclamation district that generates electricity, manages the waters of the Texas Colorado River, operates parks and assists communities in economic development.

The LCRA operates on revenues from the sale of electricity and water and other services it provides.

It cannot levy taxes and receives no tax money.

Armadillos

Continued from Page 8

last resort. The best time to shoot them is during the twilight hours or at night when they are active. Check local laws and ordinances before controlling armadillos in this way.

Although it is legal to trap armadillos at any time, persons wishing to trap and then relocate them should notify local Texas Parks & Wildlife Department representatives.

Police

Continued from Page 1

patched to the Wintermann Rice Dryer in regards to a juvenile disturbance. After the investigation, no one wanted to file charges so all were released.

At 6:18 p.m., Sgt. Crume and Officer Lasley were dispatched to the B&B Food Store. The store manager reported he had been assaulted by Stevan Torres. Torres was located and arrested. Torres had allegedly thrown his change at the manager after he had been asked to leave the store because he was causing a disturbance. Torres was transported to the county jail.

At 6:39 p.m., Officer Lasley met with a parent at the police department in regards to the juvenile leaving his house without permission. The juvenile was turned over to a family member.

At 7:52 p.m., Officer Lasley met with a subject in regards to a civil dispute over a work contract.

At 9:15 p.m., Officer Lasley met with a resident in regards to a family

member being missing. He later returned home.

At 10:10 p.m., Officer Lasley met with the mother of a runaway. During the investigation, her son showed up at the police department.

At 11 p.m., an officer met with Stacey Noska in regards to her car being damaged while it was parked at the Sportsman's Motel. The case is under investigation.

Newsbriefs

Continued from Page 1

supplied at the lowest possible prices. Supplies will be sold at the ELPS cafeteria Aug. 7 through 11 from 8 to 10 a.m. and during the first week of school (Aug. 14-18) from 7:30 to 8:30 a.m. Lists and prices will be published around the first week of Aug. For more information, call Ms. Rhodes at 234-3587 or Mrs. Reed, 234-2601.

Call About Our Daily Specials!

2K's TAQUERIA

Ron & Denise Janow, Owners

514 E. Main • Eagle Lake • 234-3060

Open: Wed.-Fri., 6:30 a.m. to 2 p.m.; Sat., 7 a.m. to 2 p.m.

Our Menu Includes...

Nopalitos, Chicharrones & Gorditas

We Have Menudo Every Saturday!

Homemade Hamburgers & Fries Thursdays!

"Have you heard about the East L.A. burritos?"



Columbus Livestock Co., Inc.

Sale Every Thursday, 10:30 a.m.

Todd L. Keaton, owner

Top Dollar For Your Cattle Every Time

Office Phone: 979-732-2622

Home: 979-865-2584

Mobile: 979-885-8647

1064 Reese Lane
Columbus, TX 78934

We will be on the air at KULM, Columbus, Wednesdays from 6:30 to 6:45 a.m. and Thursdays, live at ring side, from 2:00 to 2:15 p.m.

If we can help you with marketing your livestock, please call Todd Keaton at 409-865-2584.

If you need a truck, trailer or men to work cattle, we're as near as the phone. Out of town, call collect; your calls are welcome. Try us on your next shipment.

Call Todd Keaton, residence 409-865-2584. "At your service 24 hours a day, seven days a week, and we appreciate your business."

Columbus Livestock is located at 1064 Reese Lane, Columbus (same exit off I-10 west, Exit 698, turn right on Reese Lane). Stop in at the "Auction Barn Cafe."

Receiving cattle on Wednesday at new location; receiving pens remain the same.

Same competitive market... Same unbeatable service... New "state-of-the-art" facilities to serve You, the seller.

We appreciate your business!

Market Report for June 22, 2000
Animals on hand: cattle, 1394; four horses; 1 goat; 199 cows.

No. of sellers: 243.

Packer cows: higher dressing util-

ity and cutter cows, 41-46¢ per lb.; lower dressing utility & cutter cows, 35-40¢ per lb.; thin cows, 30-34¢.

Packer bulls: heavy weight bulls, 54-58¢; utility cutter bulls, 48-53¢.

Stocker/Feeder - Calves/Yearlings

Steers #1: 200-300 lbs., \$1.45-1.60; 300-400 lbs., \$1.20-1.35; 400-500 lbs., \$1.08-1.15; 500-600 lbs., 97¢-1.04; 600-700 lbs., 86-94¢; 700-800 lbs., 78-85¢.

Steers #2: 200-300 lbs., \$1.25-1.40; 300-400 lbs., \$1.05-1.19; 400-500 lbs., \$1.00-1.07; 500-600 lbs., 89-96¢; 600-700 lbs., 80-86¢; 700-800 lbs., 72-77¢.

Heifers #1: 200-300 lbs., \$1.35-1.45; 300-400 lbs., \$1.08-1.18; 400-500 lbs., 75¢-1.04; 500-600 lbs., 88-94¢; 600-700 lbs., 84-88¢; 700-800 lbs., 76-82¢.

Heifers #2: 200-300 lbs., \$1.20-1.35; 300-400 lbs., 99¢-1.07; 400-500 lbs., 89-94¢; 500-600 lbs., 80-87¢; 600-700 lbs., 77-83¢; 700-800 lbs., 70-75¢.

Good stocker cow/calf pairs, \$675-735 by the head; med. cow/calf pairs, \$575-660 by the head; common cow/calf pairs, \$500-565 by the head;

good stocker cows & heifers, \$500-650; med. cows & heifers, \$450-545.

Market was very good and active. Bigger cattle were \$1-\$2 higher.

Get A GTE Wireless Phone

as low as
\$19⁹⁹

When you select a Home Choice or America Choice Plan with a one year contract for 100 minutes or more! (\$15 activation fee)



GTE

AUTHORIZED WIRELESS DEALER

Prepaid Cards & Service Available

See Store for Details

Located Inside...

EAGLE LAKE DRUGSTORE

702 S. McCarty

A Radio Shack Dealer

979-234-2502



Foot Facts

By Dr. Eric R. Tepper, Podiatrist
FEET AT WORK

The National Safety Council reports 120,000 occupational foot injuries each year, including about 40,000 toe injuries. The workplace can be hazardous to the feet, especially for those who stand for long periods, work in potentially dangerous areas, or handle potentially hazardous materials. The foot can be injured by falling or rolling objects, chemicals, electric currents, extreme cold or heat, or slippery walking surfaces. The best protection is to know your workplace and its potential hazards. Take time on the job to avoid accidents and hidden dangers. Use equipment as it is intended, without cutting corners that could lead to serious injury. Always wear safety footwear, which can be comfortable, flexible, and even stylish while offering optimum foot protection.

If you are a victim of foot injury while on the job, we urge you to seek professional attention as promptly as possible. Early intervention and state-of-the-art treatment can keep you on your feet. Feet are crucial to your body's well-being. Treat them accordingly with regular podiatric care. For complete foot care for all members of your family, call 234-5571 for a Tuesday appointment at Rice Medical Center. We are currently accepting new patients.

P.S. There are many styles and types of safety footwear designed to accommodate a variety of workplaces and protect against different hazards.